

SALTA

LAND OF OPPORTUNITIES

DRIVING MINING AND ENERGY DEVELOPMENT IN
NORTHERN ARGENTINA



SALTA
GOBIERNO



remsa
ENERGÍA Y MINERÍA SALTEÑA

REMSa S.A.

- A state-majority-owned corporation.
- An efficient link between the Government, the private investment sector, and the community.
- Acts as the entity responsible for tendering and awarding mining properties, ensuring full transparency in the process.
- Strategic partner to the private sector for project development through proprietary mining assets.
- Committed to long-term environmental sustainability.
- Drives renewable and alternative energy projects.
- Promotes and funds key infrastructure projects to support industrial growth (power grids, gas pipelines, roads).
- Contributes to the productive and social development of the province by generating and managing mining and energy projects.
- The primary objective is to attract investments that create quality jobs, foster local development, and drive the growth of local suppliers.

THE DIFFERENCE OF INVESTING IN **SALTA**



- Institutional Framework.
- Geological Potential.
- Productive Ecosystem.
- Social Responsibility.



STRATEGIC GEOGRAPHICAL LOCATION



Bioceanic Corridor



Transport and Logistics Network

RELIABILITY OF THE LEGAL FRAMEWORK



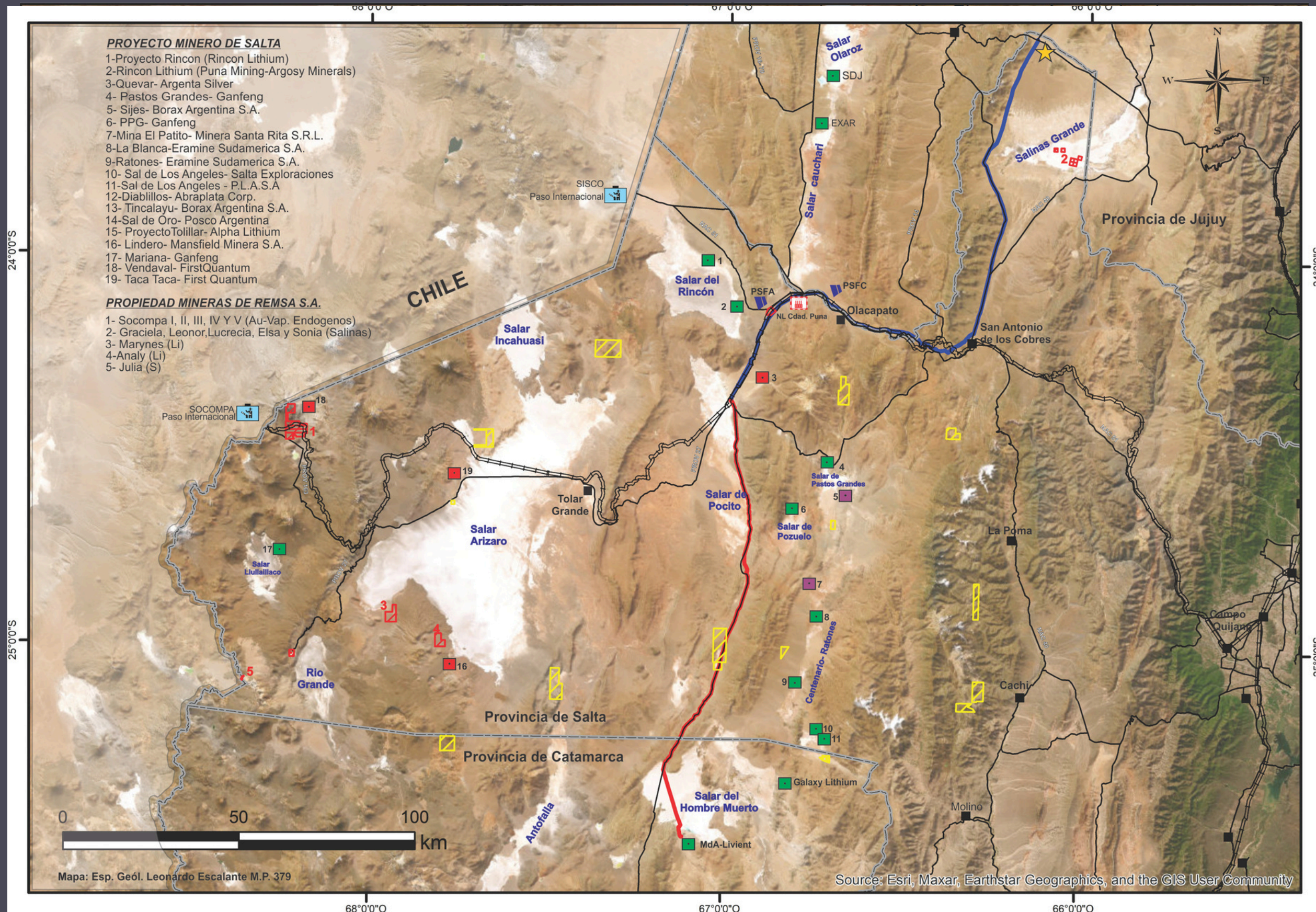
- **Mining Court**
- **Long-term certainty**
- **Fiscal stability**
- **RIGI (Large Investment Incentive Regime)**

COMPANIES INVESTING IN SALTA



THE MINING SECTOR IN SALTA

Lithium (Li)
 Copper (Cu)
 Gold (Au)
 Silver (Ag)
 Rare Earth Elements (REE)



PROYECTOS MINEROS ACTUALES DE LA PROVINCIA. TRAZAS ACTUALES Y PROYECTADAS DE GASODUCTOS. PERTENENCIAS MINERAS Y A.O.I DE REMSA S.A. SALTA - ARGENTINA.

- Propiedad Minera de REMSA
- Área de Investigación Geológica
- Área retenida por Art. 29
- Gasoducto PUNA
- Gasoducto FENIX
- Planta compresora
- PROYECTO DE LITIO
- PROYECTO DE ORO - PLATA - COBRE
- PROYECTO DE BORATOS



MINING EXPORT PERFORMANCE



Salta is the **4th largest exporting** province in Argentina



GOLD

Represents **64.3%** of Salta's total exports



LITHIUM

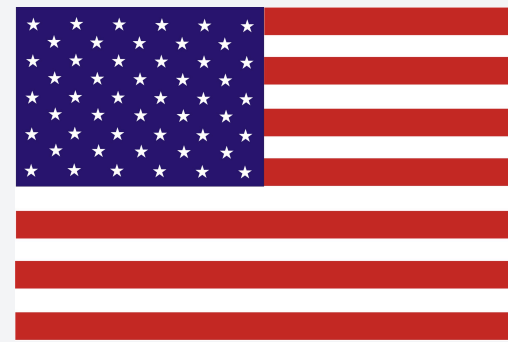
20.2% Export Share



BORATES

14.2% Export Share

TOP EXPORT DESTINATIONS



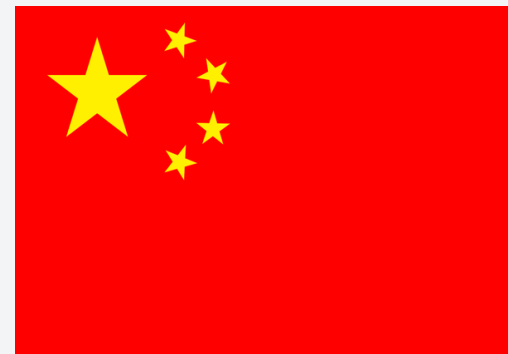
USA

62,1%



BRAZIL

11,9%



CHINA

7,2%



GERMANY

7,8%



SOUTH AFRICA

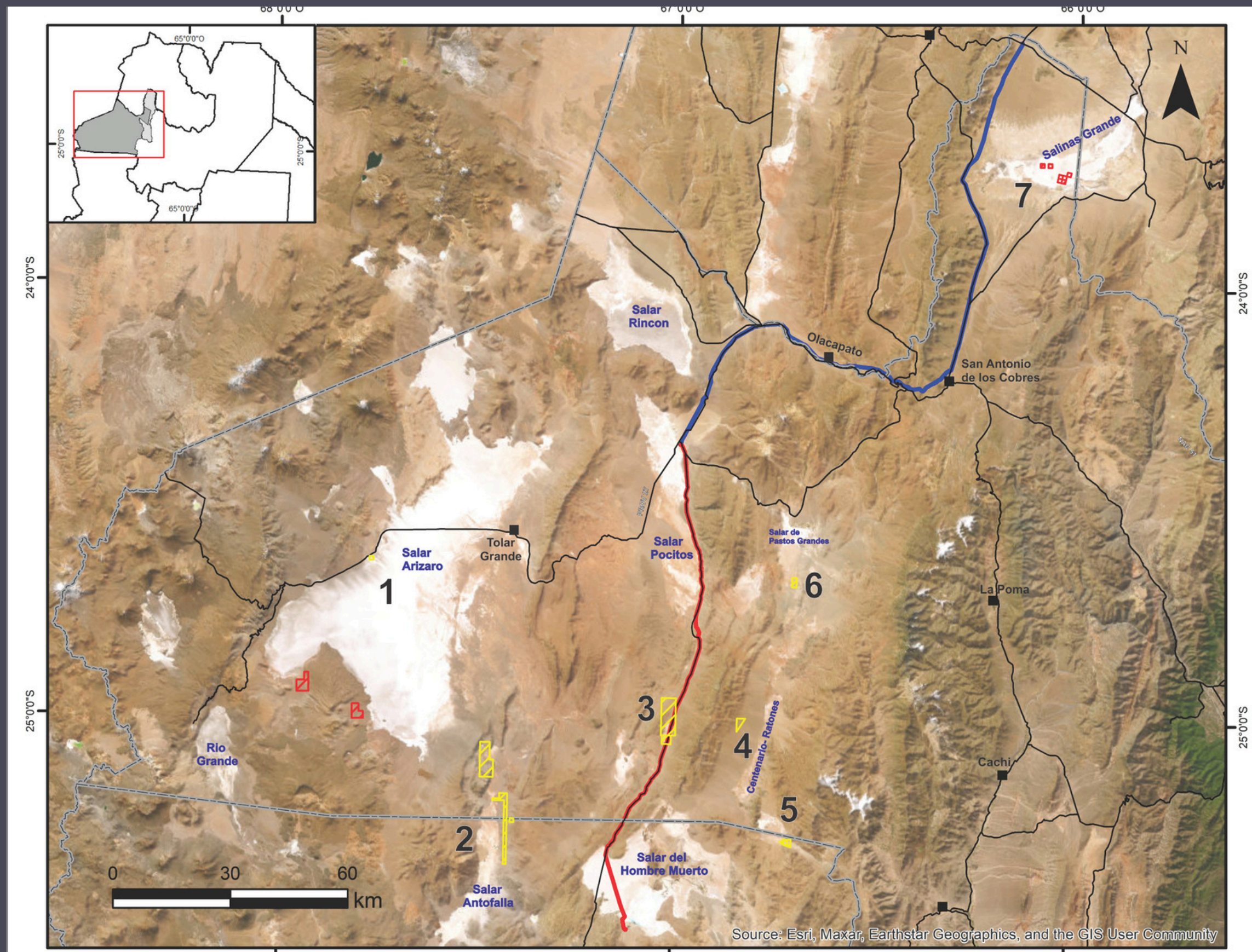
2,8%

MINERAL AND ENERGY ASSETS

AVAILABLE PROSPECTIVE **AREAS**

MINERAL AND ENERGY ASSETS

AVAILABLE PROSPECTIVE AREAS



- 1 Salar de Arizaro
- 2 Salar Antofalla
- 3 Salar Tolar Chico
- 4 Centenario Ratones
- 5 Salar Diablilos
- 6 Salar de Pastos Grandes
- 7 Salinas Grandes



ART. 29

NAME	MINERAL	DEPARTAMENT	BOROUGH	LOCATION	TENEMENT
LUCHI 01	Li	LOS ANDES	TOLAR GRNDE	ARIZARO	100,00 ha
SOFÍA 5	BORATOS	LOS ANDES	SAN ANTONIO DE LOS COBRES	SIJES	288,00 ha
ZORRIQUÍN 1	Li	LOS ANDES	SAN ANTONIO DE LOS COBRES	DIABLILLOS	45,76 ha
CICERON	SALINAS	LOS ANDES	SAN ANTONIO DE LOS COBRES	SALAR TOLAR CHICO	500,00 ha
CICERÓN LS	Li	LOS ANDES	SAN ANTONIO DE LOS COBRES	SALAR TOLAR CHICO	3498,59 ha
ALCALINA VI	Li, BORATOS, SALES ALCALINAS	LOS ANDES	TOLAR GRANDE	CORTARDERA	2592,11 ha

REMSA S.A. AVAILABLE MINING PROPERTIES

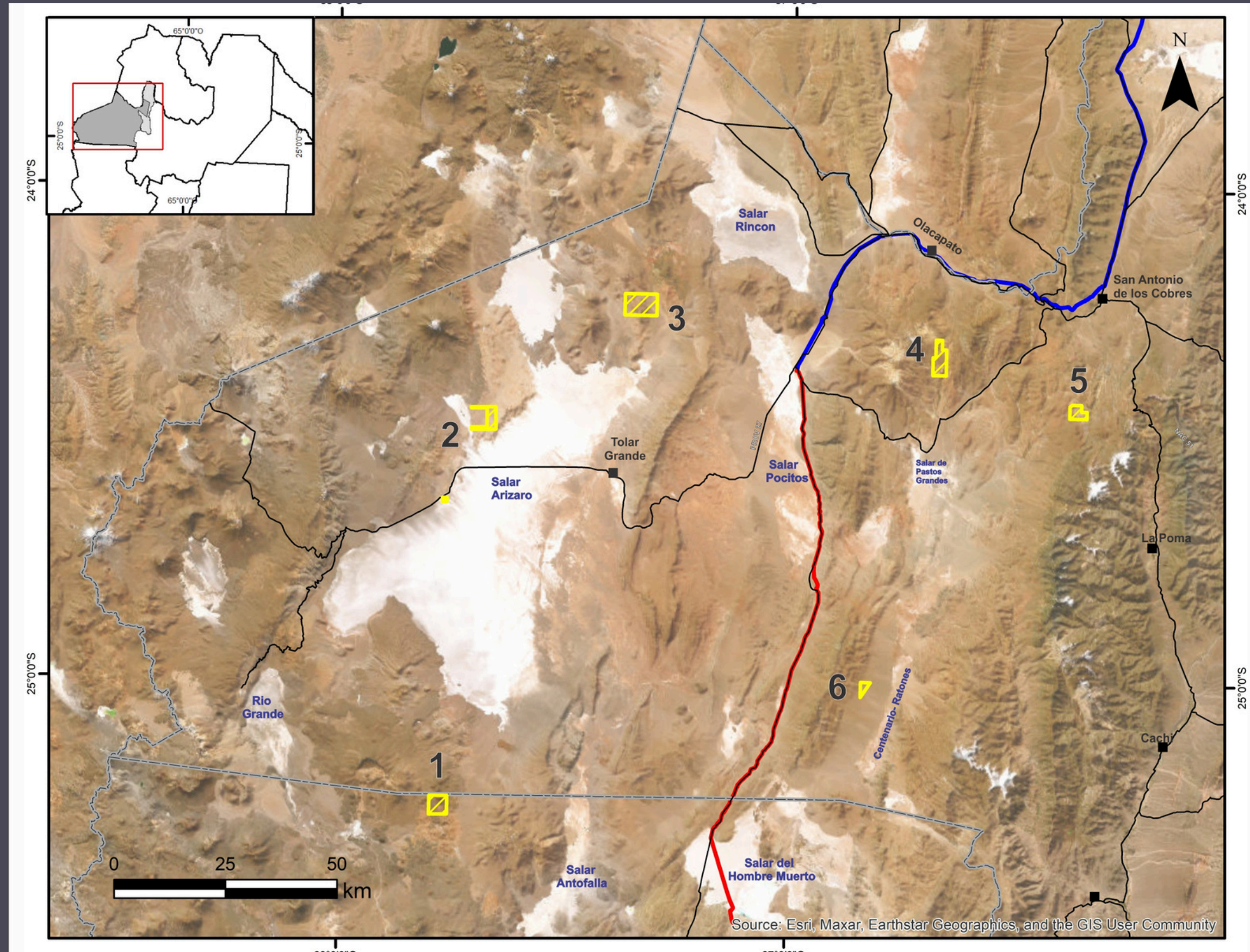
NAME	MINERAL	DEPARTAMENT	BOROUGH	LOCATION	TENEMENT
SONIA	Li	LA POMA	LA POMA	SALINAS GRANDES	99,95 ha
LUCRECIA	Li	LA POMA	LA POMA	SALINAS GRANDES	99,95 ha
GRACIELA	Li	LA POMA	LA POMA	SALINAS GRANDES	99,85 ha
LEONOR	Li	LA POMA	LA POMA	SALINAS GRANDES	99,95 ha
ELSA	Li	LA POMA	LA POMA	SALINAS GRANDES	99,11 ha

REMSA S.A. AVAILABLE MINING PROPERTIES

NAME	MINERAL	DEPARTAMENT	BOROUGH	LOCATION	TENEMENT
MARYNES	Li	LOS ANDES	TOLAR GRANDE	SALAR ARIZARO	1054,26 ha
PRODE I	Li	LA POMA	LA POMA	SALINAS GRANDES	99,85 ha
LA PLATA	Li	LA POMA	LA POMA	SALINAS GRANDES	99,95 ha
ANALY	Li	LOS ANDES	TOLAR GRANDE	SALAR ARIZARO	847,07 ha

MINERAL AND ENERGY ASSETS

AVAILABLE PROSPECTIVE AREAS



- 1 Archibarca
- 2 Taca Taca
- 3 Cerro Oscar
- 4 El Quevar- Agua Caliente
- 5 Organullo
- 6 Centenario

79
Au
Gold
196.9665

47
Ag
Silver
107.8682

29
Cu
Copper
63.546

ART. 29

NAME	MINERAL	DEPARTAMENT	BOROUGH	LOCATION	TENEMENT
ALHELI X	Cu, Au	LOS ANDES	TOLAR GRANDE	ARCHIBARCA	1,679,72 ha
LUCHI 01	Cu	LOS ANDES	TOLAR GRANDE	ARIZARO	100,00 ha
PASTOS GRANDES	Ag, Cu, Au, Mo	LOS ANDES	SAN ANTONIO DE LOS COBRES	AGUAS CALIENTES	1929,00 ha
CRISTALITA 02	Cu	LOS ANDES	TOLAR GRANDE	TACA TACA	1285, 70 ha

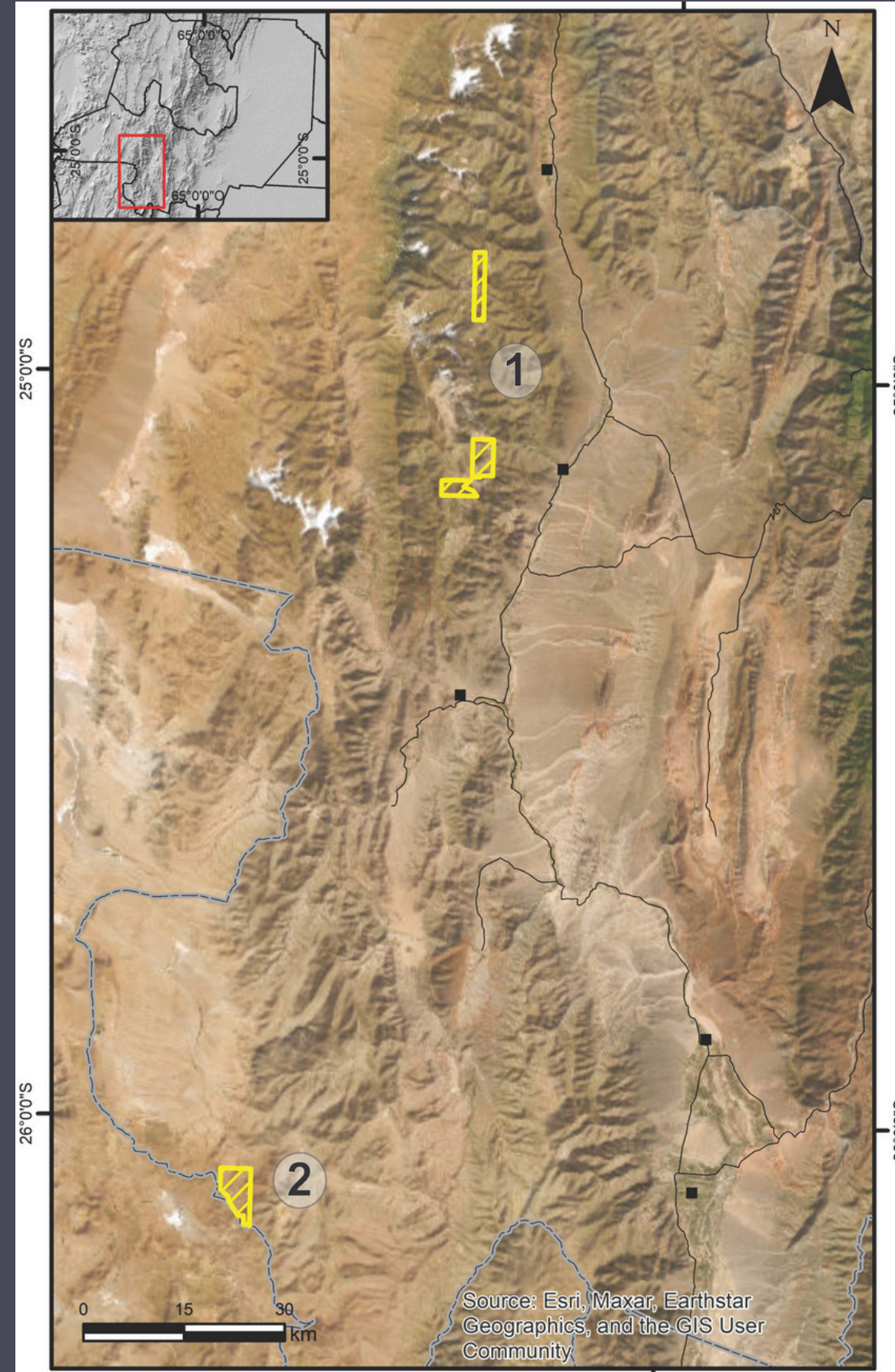
REMSA S.A. MINING PROPERTIES

NAME	MINERAL	DEPARTAMENT	BOROUGH	LOCATION	TENEMENT
SEPULTURA	Au ALUVIAL	SANTA VICTORIA	SANTA VICTORIA OESTE	PUCARÁ	1,679,72 ha
PUCARÁ I	Au ALUVIAL	SANTA VICTORIA	SANTA VICTORIA OESTE	RÍO SANTA CRUZ	91,07 ha
JULIA	AZUFRE (S)	LOS ANDES	TOLAR GRANDE	CERRO LA ESTRELLA	30,00 ha

MINERAL AND ENERGY ASSETS

AVAILABLE PROSPECTIVE AREAS

Rare Earth Elements (REE)



- 1 Cachi - Palermo
- 2 San Carlos

ART. 29

NAME	MINERAL	DEPARTAMENT	BOROUGH	LOCATION	TENEMENT
OLIVIA VII	ETR	CACHI	LA POMA	TRANCAS	1,691.36 ha
CATALINA XI	ETR	CACHI	CACHI	CERRO BOLA	1,331.47 ha
LUINGO II	ETR	SAN CARLOS	ANGASTACO	ANGASTACO	2,683.73 ha
CROSBY 3	ETR	CACHI	CACHI	POZO BRAVO	1464,31 ha

MINERAL AND ENERGY ASSETS

GREEN ENERGY

Geothermal Potential:
La Puna, in Salta, has vast geothermal potential, standing out as one of Argentina's most promising renewable energy hubs.



REMSA S.A. AVAILABLE MINING PROPERTIES

NAME	Mineral	LOCATION	TENEMENT
SOCOMPA I	Geothermal Fluids	Socompa	630, 00 ha
SOCOMPA II	Geothermal Fluids	Socompa	630, 00 ha
SOCOMPA III	Geothermal Fluids	Socompa	630, 00 ha
SOCOMPA IV	Geothermal Fluids	Socompa	630, 00 ha
SOCOMPA V	Geothermal Fluids	Socompa	682.12 ha

ENERGY ASSETS

GREEN ENERGY

- **Altiplano 200 Solar Power Plant (Olacapato):** In partnership with Neoen, the Plant supplies 40% of Salta's total energy demand.
- **Solar Power Potential:** The Salta Puna has solar irradiation levels similar to the world's leading solar hubs, positioning it as a highly strategic region for large-scale renewable energy development.
- **Strategic Long-Term Plan: REMSA S.A.** drives a comprehensive strategy that integrates energy infrastructure, sustainable natural resource management, and the creation of high-value investment opportunities.



ENERGY INFRASTRUCTURE PROJECTS

ENERGY INFRASTRUCTURE PROJECTS

NATURAL GAS PIPELINES

- Sub-distributes natural gas to the **mining industry**
- Manages the **Puna-Fénix and Anta** pipelines
- Operates over **570 km** pipeline network
- Installation of **residential gas networks**



LOGISTICS INFRASTRUCTURE PROJECTS

ROAD INFRASTRUCTURE

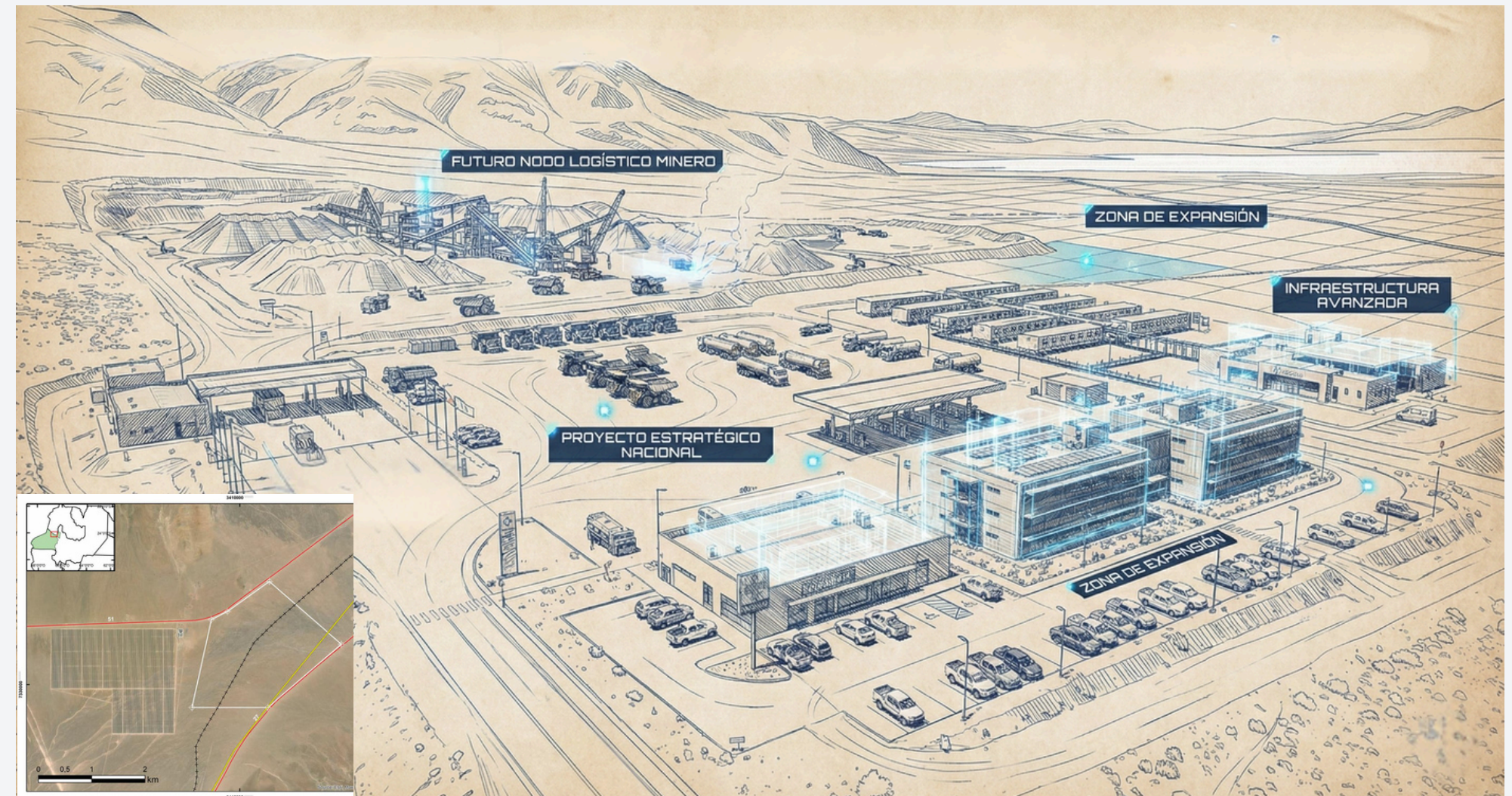
- **RN 51 Bypass** (Campo Quijano): A rapid alternative route connecting National Route 51 (RN 51) with Provincial Route 36 (RP 36) to streamline **heavy mining transport**.
- Paving of RP 27: **Optimizes mining transport logistics** at the site of the planned Mining Logistics Node (MLN), located within the Bioceanic Corridor.



MINING LOGISTICS HUB PROJECT

Spearheaded by REMSA S.A. & the Government of Salta

- **Objective:** To transform mining and industrial logistics in the Puna region.
- **Strategic Location:** An operational hub at the intersection of RN 51 and RP 27.
- **Core Functions:** Cargo consolidation and supply distribution.
- **Global Reach:** Connecting production to international markets via the Bioceanic Corridor.



CONCEPTUAL RENDERING OF THE MINING LOGISTICS HUB

THANK YOU.

WE INVITE YOU TO BE PART OF SALTA'S MINING FUTURE



remsa.gov.ar



Pitch deck